

OnSite™ Wall Racks

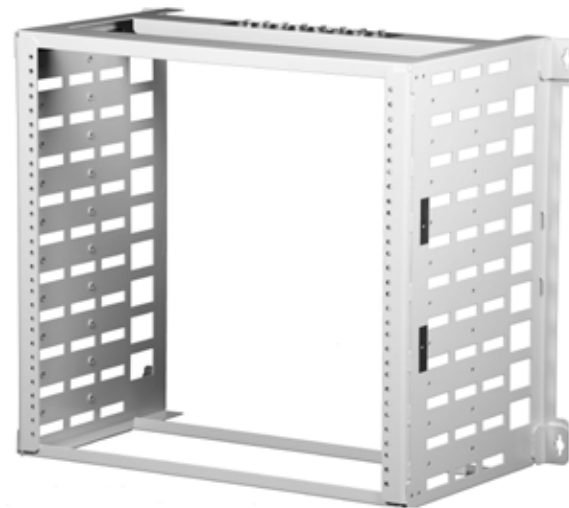
Compact, full-featured wall mountings
for your rack-based equipment

Rack & stack on wall or backboard

- Easy installation for up to 5, 10, or 15 rack units
- Reduces wall-space requirements 80%, compared to flat mounting of equipment
- Manages copper and fiber cables



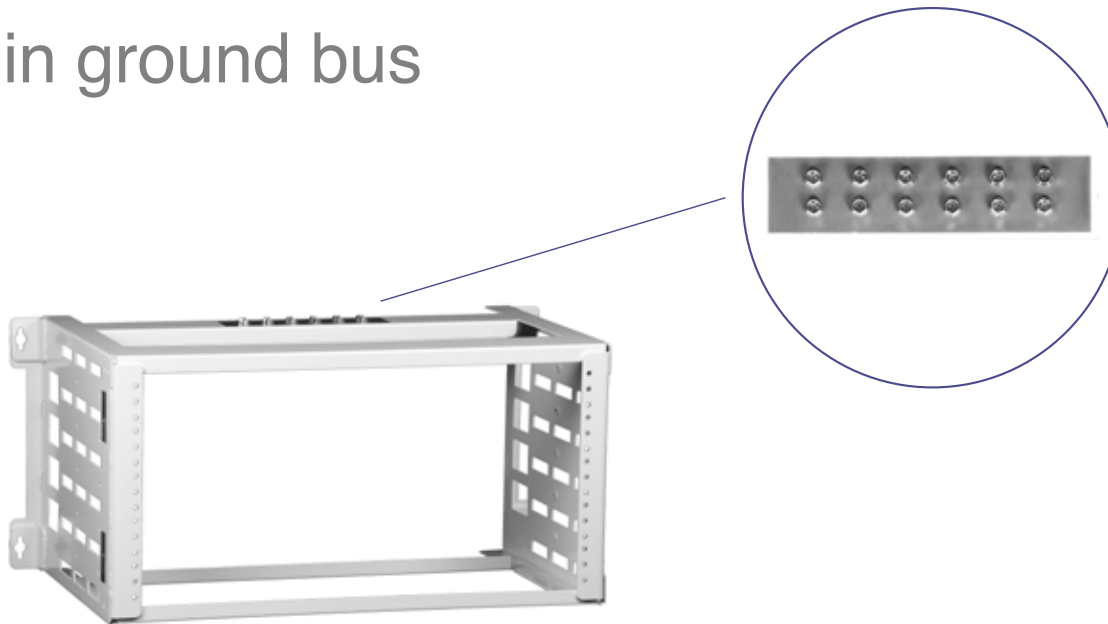
Model WR-5UI2



Model WR-10U

Carrier-class construction

- NEBS compliant, including Zone 4 earthquake
- No assembly required
- Built-in ground bus



Available models

Model #	Equip Capacity	Height	Width	Depth	Weight	Load Capacity	Ground Points
WR-5UI2	5U/19"	11.0"	22.7"	12.6"	10.2 lb	100 lb	6 pairs
WR-10U	10U/19"	19.3"	22.7"	12.6"	14.0 lb	200 lb	8 pairs
WR-10U23	10U/23"	19.3"	26.7"	12.6"	14.8 lb	200 lb	8 pairs
WR-15U	15U/19"	28.0"	22.7"	12.6"	18.0 lb	200 lb	10 pairs
WR-15U23	15U/23"	28.0"	26.7"	12.6"	19.4 lb	200 lb	10 pairs



OnSite™ Swing-Out Adapters

Install on
wall behind
WR-xx rack

Mounting studs
for wall rack



Flexible fiber
cable guide

Ground studs for
dual-hole lugs
(strap included)

Opens up to 90°
for rear access to
equipment



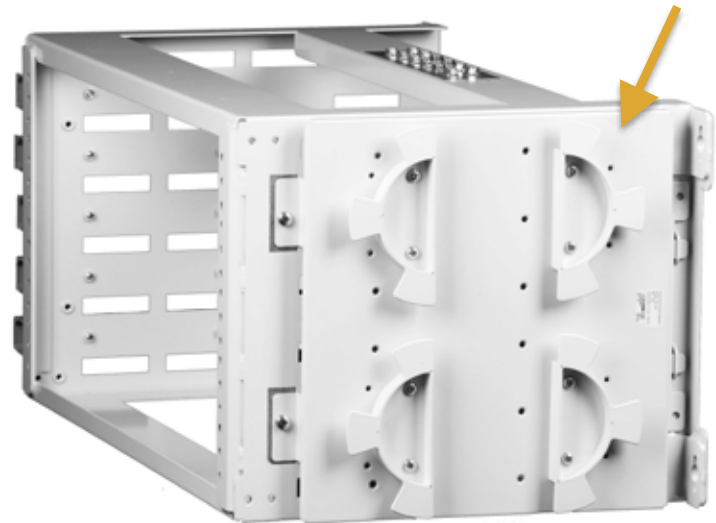
Zone 4
compliant

Swing-Out Adapter models

Model #	Height	Width	Depth	Weight	Wall Racks Supported
SOA-5U	10.5"	26.5"	4.0"	13.0 lb	WR-5UI2
SOA-10U	19.5"	26.5"	4.0"	17.4 lb	WR-10U WR-15U
SOA-10U23	19.5"	30.5"	4.0"	19.4 lb	WR-10U23 WR-15U23

Slack take-up reels

- **Model # SPL-4H:** Side plate with two split reels
- Conveniently manages excess cable slack
- Plate mounts to either side of all WR-xxx wall racks



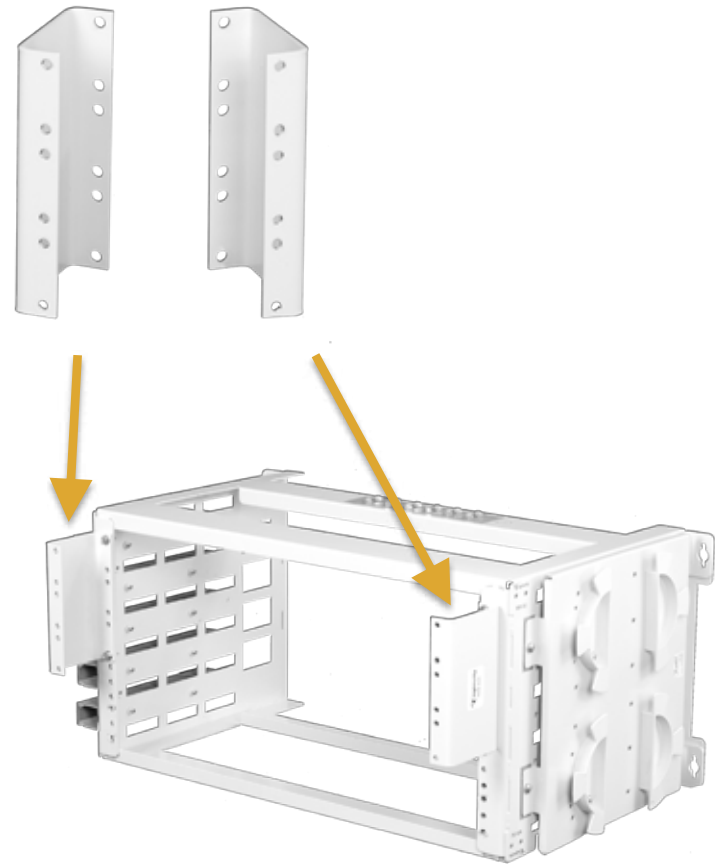
Cable guides

- **Model # CG-5:** Pack of five cable guides
- Sliding covers keep cables neatly in place
- Attach to either side of all WR-xxx wall racks



Extension Brackets

- Adds 3" front extension
- Supports deeper equipment
- Multiple pairs can be used in taller racks
- **Model # REB-3U3: 3U high**
- **Model # REB-5U3: 5U high**



Other accessories



Model # DRNG-U-1

Front-mounted D-ring for all racks

Model # CMB-1

Front-mounted cable management bar for 19" racks



Model # S03-1224108

Package of (100) #12-24 x 1/2" screws for rack-mount equipment

Thank You!



3545 Stern Avenue

St. Charles, IL 60174

(800) 980-ECOM / (630) 444-0778

www.enginuitycom.com